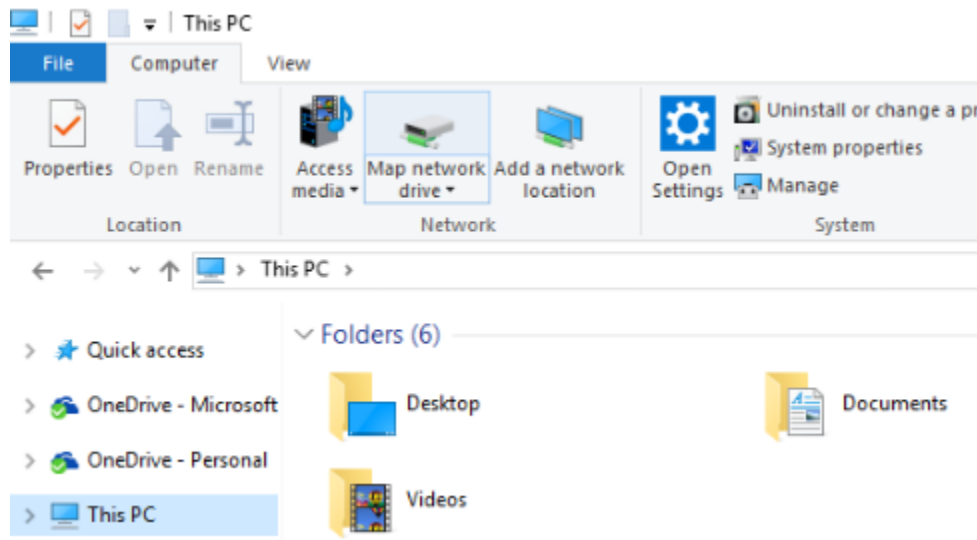
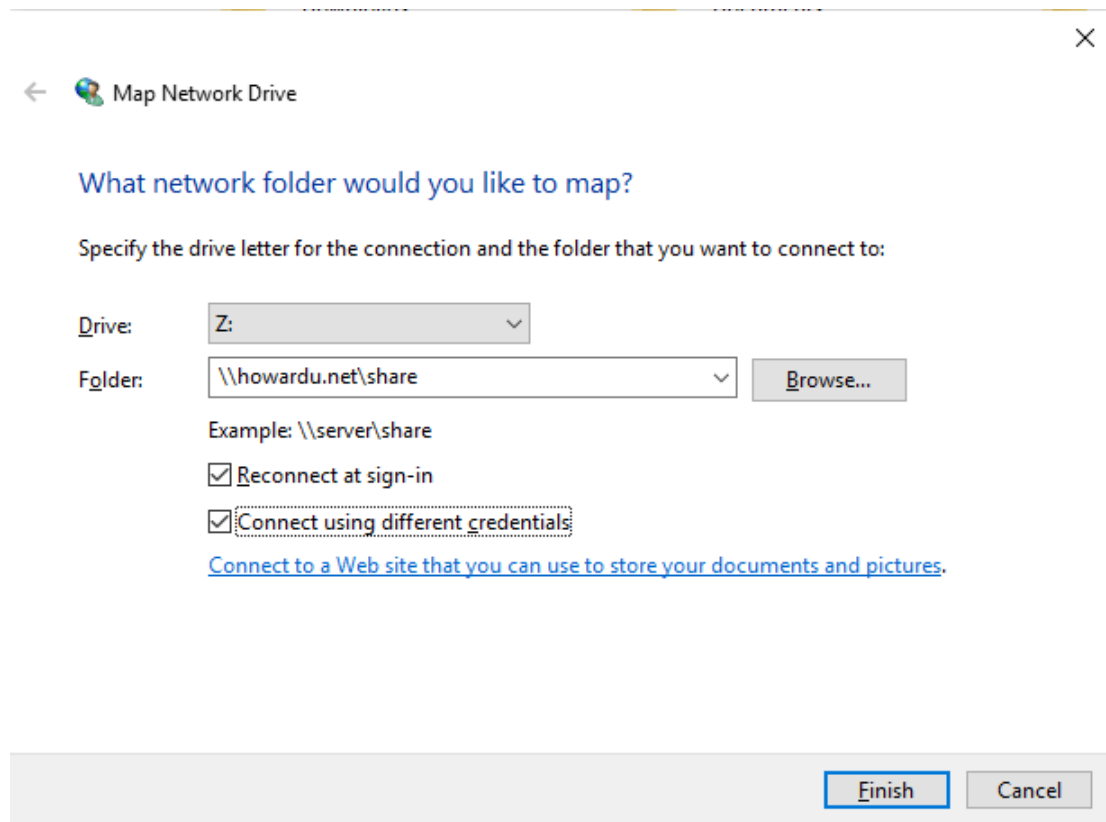


From a Windows computer:

1. Open **File Explorer** from the taskbar or the **Start** menu or press the **Windows logo key + E**.
2. Select **This PC** from the left pane. Then, on the **Computer** tab, select **Map network drive**.



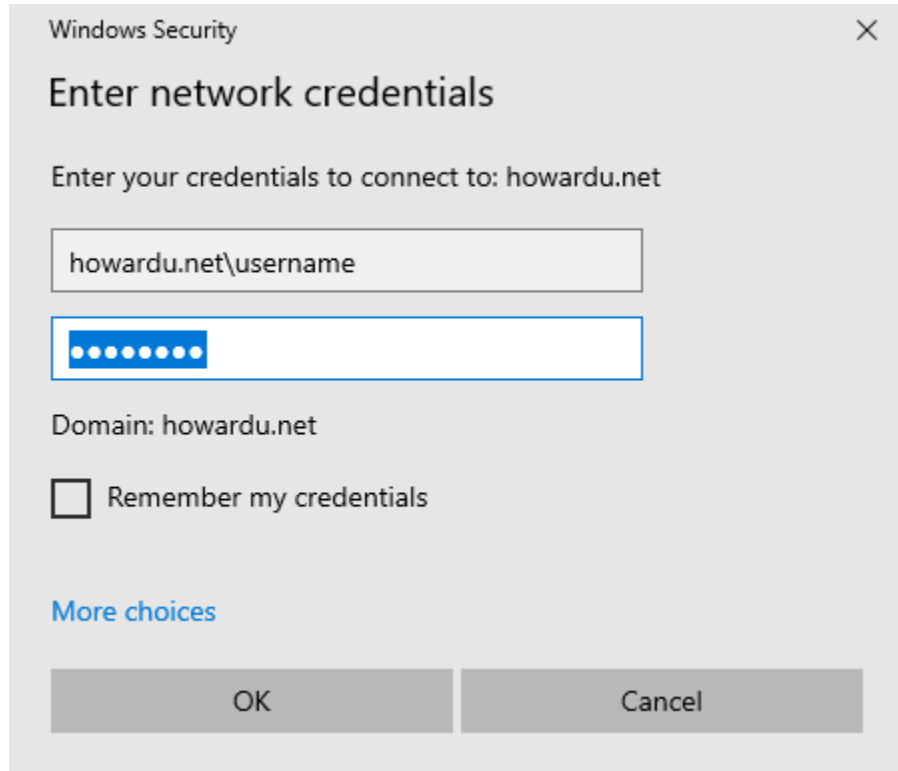
3. In the **Drive** list, select a drive letter. (Any available letter will do.)



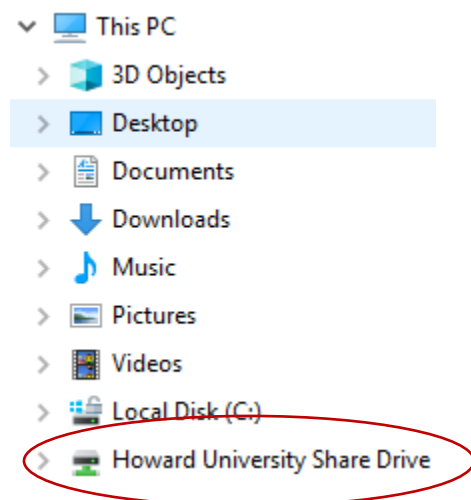
4. In the **Folder** box, use the referenced path above for the folder or computer. To connect every time you log on to your PC, select the **Reconnect at sign-in** check box. Next, select **"Connect using different credentials"**.

5. Select **Finish**.

6. Enter your network credentials using the following syntax for your username: "howardu.net\username" and enter your network password.



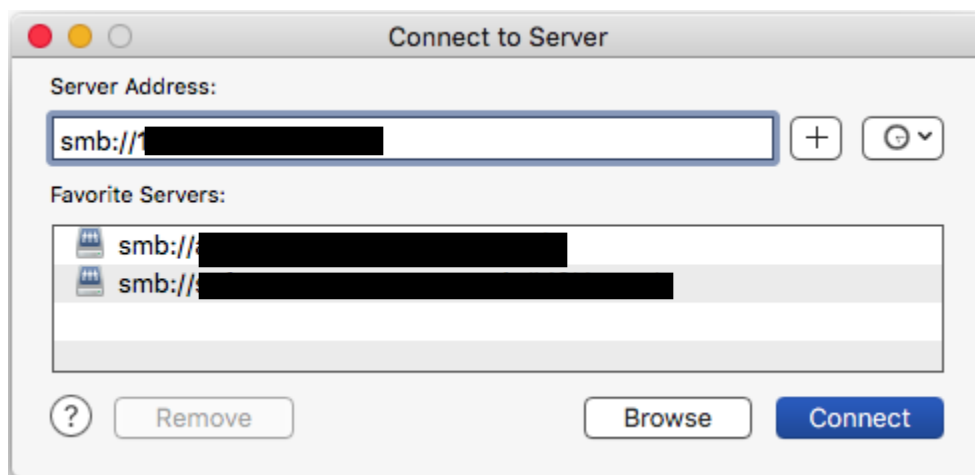
7. You are now successfully connected to your network drive.



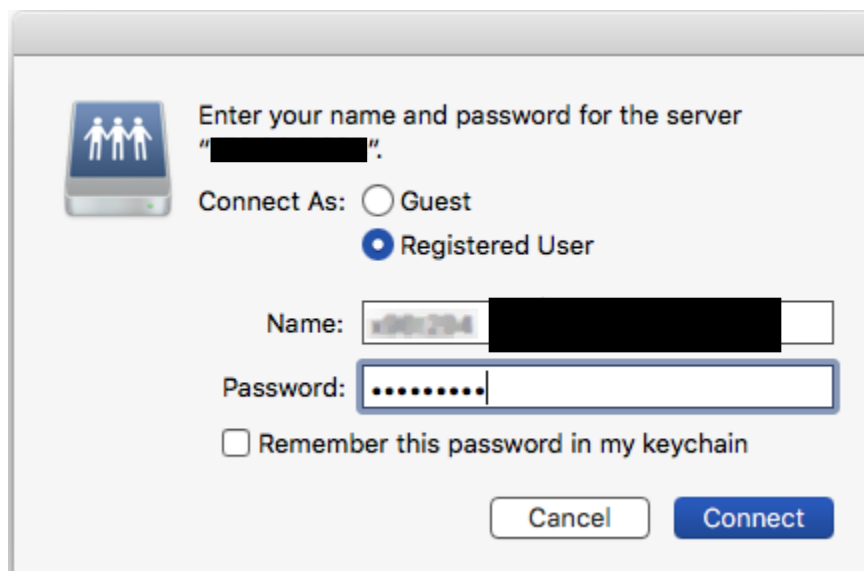
=====

Mac Network Share Instructions

1. From the Finder menu, click **Go**.
2. Click **Connect to Server** from Go's drop down menu.
3. Alternatively, you can also press **Command+K** to launch **Connect to Server**.
4. In the Server Address field, enter **smb://howardu.net/share** to define the network protocol for SMB, and then enter either the IP address or the hostname of the server.
5. To add the server to your Favorite Servers list, click the '+' button.



6. Click **Connect** to connect to the share.
7. When prompted, enter your Howard University network username and password to connect to server.



8. Once the connection is made, the share you have access to will appear on your desktop

